

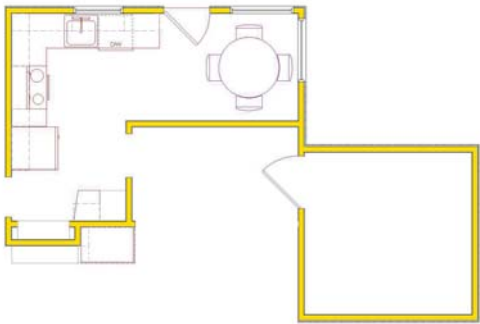
Project Portfolio 1

Small Changes Make for Big Spaces

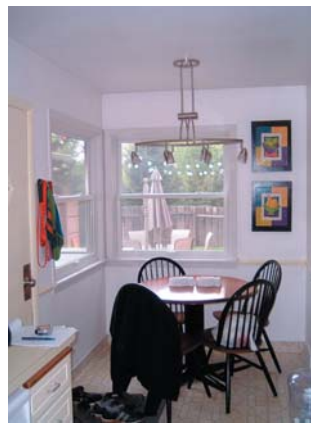
Their kitchen wasn't even 100 square feet. Their dining area, not quite 60. They longed for a spacious place to make meals for their young and growing family, but the cost of adding space just wasn't in the cards. Yet their yard was perfect. Their schools were excellent. It was looking like they'd just have to put up with it.

Enter Murphy Bros. design and remodeling consultants. By simply opening up an interior wall, enough space was gained for an island, dramatically altering the room's function. Seating was incorporated into the island, bringing the dining and prep areas together. Voila! A kitchen this young family can love!

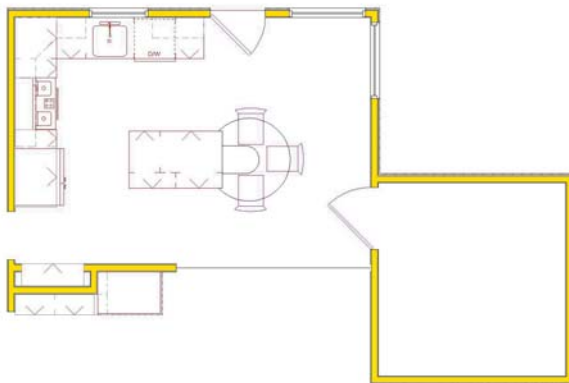
Existing Floor plan: Non-functional, dated materials



Before: Dining area is tucked into cramped nook



*After floor plan:
Efficient work triangle, more storage, better lighting*



After: Dining area is open, airy, and accessible. Classic material lend a dramatic air

