

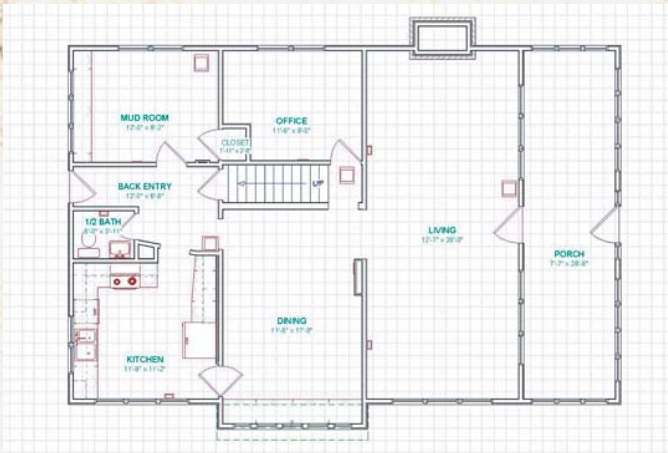
Project Portfolio 6
Classically Metropolitan Living



This 1920's home, located in the Longfellow Community of Minneapolis, was in need of some revitalization. To do this Murphy Bros. raised the ceiling in the dining room and opened up the adjacent stair case. To further open up the floor plan, a wall was removed from between the kitchen and the formal dining room.

The kitchen also contained integrated arched doorways and a design inspired island for more casual dining. This new kitchen includes classically timeless enameled cabinets and a hand hammered copper farmhouse sink. The east kitchen wall was thickened to create more architectural depth to the kitchen window.

Old Floor Plan



Before Project Began



New Floor Plan



After Completion

